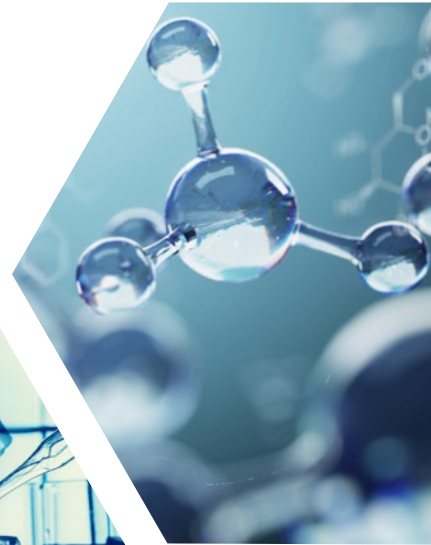


**USEFUL SHORTCUTS
IN CHROMELEON™**



CLASSIC WINDOWS SHORTCUTS IN CHROMELEON™

SHORTCUT	FUNCTION
STRG Z	Undo; Undo the last step
STRG Y	Redo; Undo the last Undo
STRG C	Copy; Copies the selected object
STRG V	Paste; Inserts the copied or cut object
STRG X	Cut; Cuts the selected object
STRG S	Save; Opens the Save menu
F2	Rename; Renames the selected object
F5	Refresh; Performs a screen refresh
Entf	Delete; Deletes the selected object

HELPFUL SHORTCUTS FOR EDIT CHROMATOGRAMS

CHROMATOGRAMS VIEW:

SHORTCUT	FUNCTION
F4	Displays the next chromatogram
Shift F4	Displays the previous chromatogram
F10	Displays the next channel
Shift F10	Displays the previous channel
arrow keys	Scrolls in the chromatogram or plot in the corresponding direction
+ (number pad)	Zooms into the chromatogram vertically
- (number pad)	Zooms out of the chromatogram vertically
* (number pad)	Zooms into the chromatogram vertically
/ (number pad)	Zooms out of the chromatogram vertically
5 (number pad)	Changes the zoom to Full Size
STRG Left arrow	Jump to the next integrated peak
STRG Right arrow	Jump to the previous integrated peak

By pressing the Home button (Figure 1) on the keyboard, the view jumps to the first data point when the chromatogram is open.

If the Time Spectra tool is active in the ribbon and a peak is clicked with the CTRL key held down, several spectra can be displayed in the spectral plot. This works very well with UV, fluorescence or MS spectra.

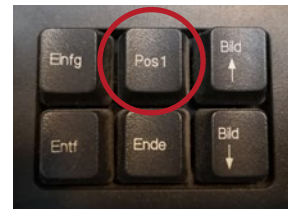


Figure 1: The home button on the keyboard.

Individual data points can be read out with the Time Spectra Tool function (e.g. MS spectra). By pressing the SHIFT key and then pressing the arrow keys on the keyboard you can jump from data point to data point.

OTHER SPECIFIC SHORTCUTS

With the F9 key marked contents can be filled out in tables downwards (Fill Down). This also works with a marked area in a table. Then the first entry in the marked area would be filled down. The F9 function only works with one column at a time.

The F8 function can be used in the instrument panel and opens the command window for the device (Figure 2).

Combinations CTRL I (Instruments); CTRL D (Data) and CTRL W (eWorkflows) open the appropriate category in the Chromeleon™ Console.

In the Chromeleon™ Chromatography Studio, the shortcut CTRL-SHIFT-F12 opens the Layout Editor (Figure 3), allowing you to change the arrangement of the windows in the studio.

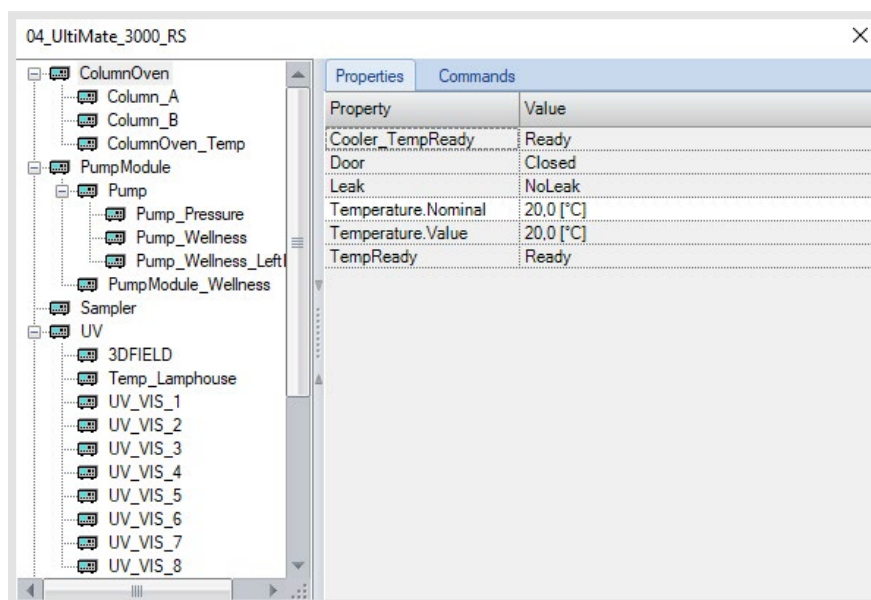
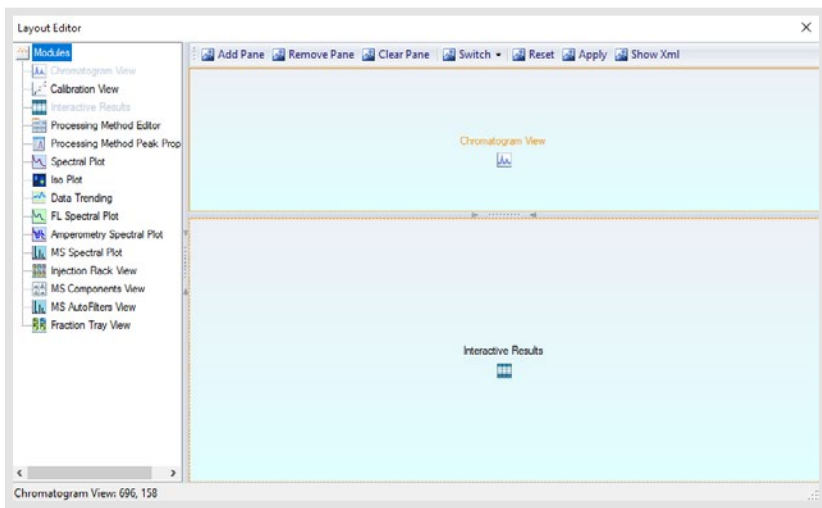


Figure 2: Command window of the instrument.



The chromatogram can be displayed under the result tables using drag+drop. The changes must be confirmed with Apply in the Layout Editor (Figure 3). The changes are stored in the assigned View Settings.

Figure 3: Layout Editor in Chromeleon™ Studio.

In the navigation pane in the chromatography studio, when multiselecting injections (or components or channels) while pressing the CTRL Button, hitting the spacebar automatically pins these (Figure 4).

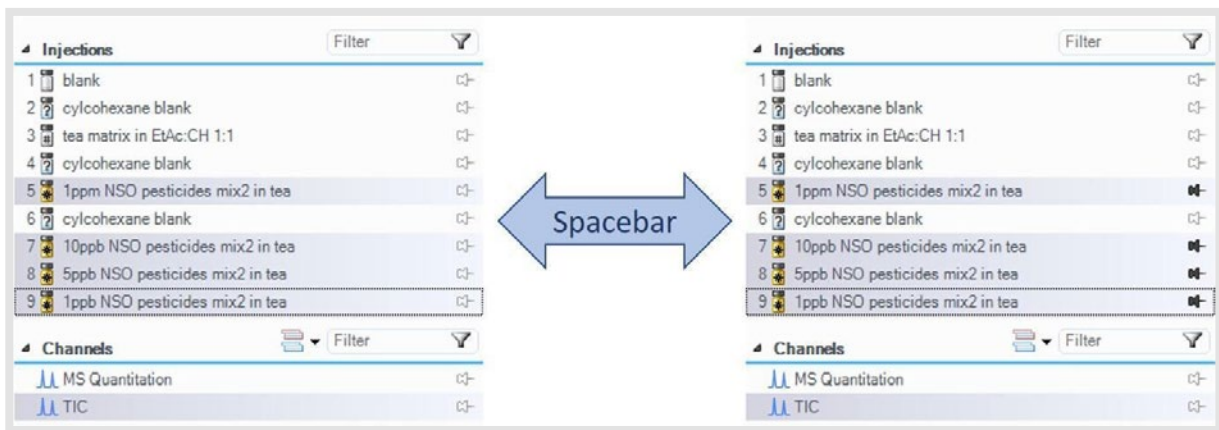


Figure 4: Pin injections at the same time

By hitting F2 twice in the Report Designer or in the Interactive Results the formula is presented in a separate window.

DR. JULIAN RAMCKE

Life Science Consultant, Qpliance GmbH

Julian Ramcke has studied Chemistry at the University of Hamburg and after completing his PhD he worked in the field of corrosion protection and lubricants. Since November 2017, he works at Qpliance GmbH, focusing on GxP Consulting, GMP in instrumental analysis and Computer Systems Validation (CSV). He is also a Chromeleon Trainer certified by Thermo Fisher.

E-Mail: julian.ramcke@qpliance.com

www.qpliance.com





Qpliance GmbH

Marie-Curie-Str. 3 | 14656 Brieselang

Tel.: +49 (0) 3 32 32 46 47 43

Mobil: +49 (0) 163 2 04 49 22

info@qpliance.com

www.qpliance.com